

2026 Torneo Selección Nacional Élite y 2da. Fuerza Masculino Día 3 (2025 PBA Monacelli - 40')



Oil Pattern Distance: 40 Feet	Reverse Brush Drop: 34 Feet	Oil Per Board: 50 uL
Forward Oil Total: 17,6 mL	Reverse Oil Total: 13,3 mL	Volume Oil Total: 30,9 mL
Forward Boards Crossed: 352 Boards	Reverse Boards Crossed: 266 Boards	Total Boards Crossed: 618 Boards

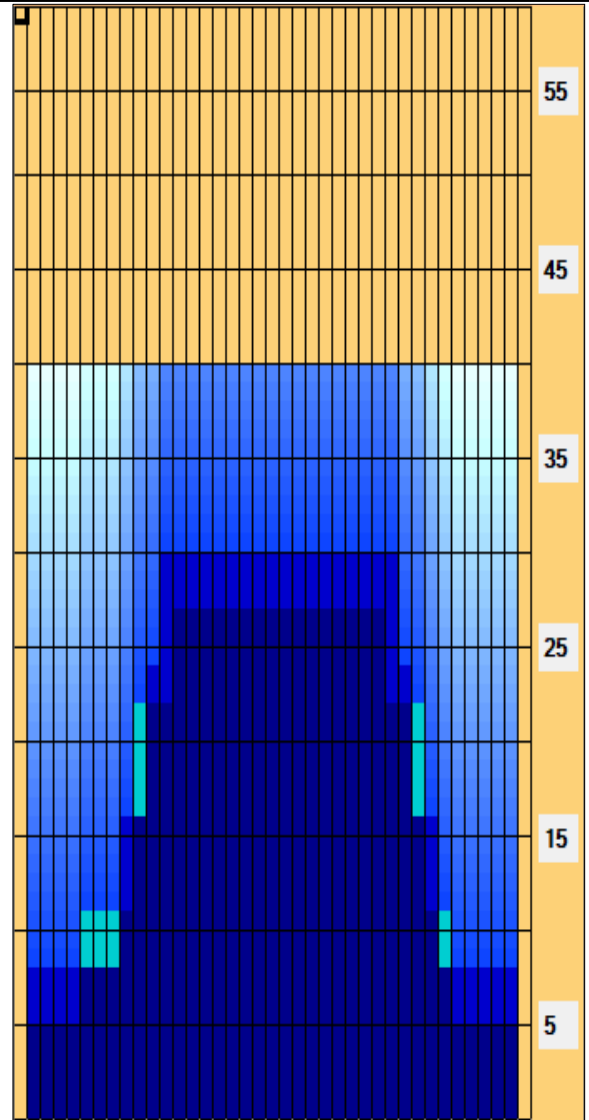
Start	Stop	Loads	Speed	Crossed	Start	End	Feet	T.Oil
1	2L 2R	4	14	148	0,0	5,9	5,9	7400
2	6L 7R	3	14	84	5,9	11,8	5,9	4200
3	10L 9R	4	18	88	11,8	22,0	10,2	4400
4	13L 12R	2	18	32	22,0	27,1	5,1	1600
5	2L 2R	0	18	0	27,1	32,0	4,9	0
6	2L 2R	0	18	0	32,0	36,0	4,0	0
7	2L 2R	0	18	0	36,0	40,0	4,0	0

Start	Stop	Loads	Speed	Crossed	Start	End	Feet	T.Oil
1	2L 2R	0	30	0	40,0	30,0	-10,0	0
2	12L 11R	2	22	36	30,0	23,8	-6,2	1800
3	11L 10R	3	18	60	23,8	16,2	-7,6	3000
4	9L 8R	4	14	96	16,2	8,3	-7,9	4800
5	2L 2R	2	14	74	8,3	4,4	-3,9	3700
6	2L 2R	0	14	0	4,4	0,0	-4,4	0

Conditioner:
Type In or Select
One

TransferType:
Type In or Select
One

- Forward
- Reverse
- Combined
- Buff



Item	3L-7L:18L-18R	8L-12L:18L-18R	13L-17L:18L-18R	18L-18R:17R-13R	18L-18R:12R-8R	18L-18R:7R-3R
Description	Outside Track:Middle	Middle Track:Middle	Inside Track:Middle	Middle: Inside Track	Middle:Middle Track	Middle:Outside Track
Track Zone Ratio	3,33	1,48	1	1	1,25	3,64

