

# 2024 Campeonato Nacional Juvenil Sub 12 (WALL STREET V2 - 40')



Oil Pattern Distance: <b>40 Feet</b>	Reverse Brush Drop: <b>35 Feet</b>	Oil Per Board: <b>50 uL</b>
Forward Oil Total: <b>13,6 mL</b>	Reverse Oil Total: <b>10 mL</b>	Volume Oil Total: <b>23,6 mL</b>
Forward Boards Crossed: <b>272 Boards</b>	Reverse Boards Crossed: <b>200 Boards</b>	Total Boards Crossed: <b>472 Boards</b>

Start	Stop	Loads	Speed	Crossed	Start	End	Feet	T.Oil
1	2L 2R	2	18	74	0.0	2.5	2.5	3700
2	10L 10R	3	18	63	2.5	10.1	7.6	3150
3	10L 10R	4	18	84	10.1	20.3	10.2	4200
4	12L 12R	3	18	51	20.3	27.9	7.6	2550
5	2L 2R	0	22	0	27.9	33.0	5.1	0
6	2L 2R	0	30	0	33.0	40.0	7.0	0

Start	Stop	Loads	Speed	Crossed	Start	End	Feet	T.Oil
1	2L 2R	0	30	0	40.0	34.0	-6.0	0
2	11L 11R	5	22	95	34.0	18.5	-15.5	4750
3	10L 10R	5	18	105	18.5	5.8	-12.7	5250
4	2L 2R	0	14	0	5.8	0.0	-5.8	0

Conditioner:  
Type In or Select One

TransferType:  
Type In or Select One

Forward



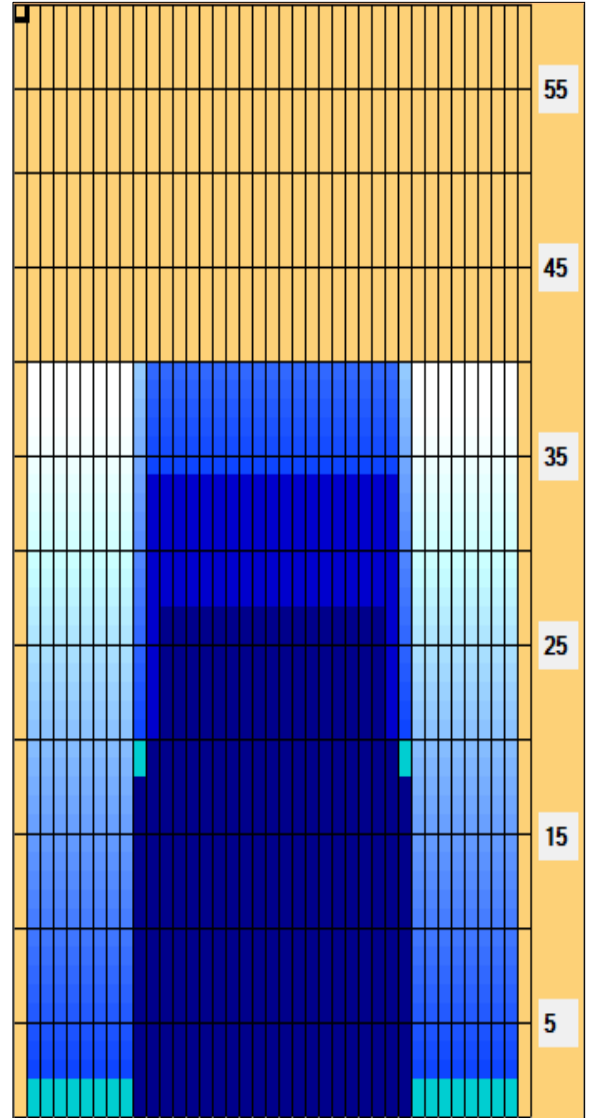
Reverse



Combined



Buff



Item	3L-7L:18L-18R	8L-12L:18L-18R	13L-17L:18L-18R	18L-18R:17R-13R	18L-18R:12R-8R	18L-18R:7R-3R
Description	Outside Track:Middle	Middle Track:Middle	Inside Track:Middle	Middle: Inside Track	Middle:Middle Track	Middle:Outside Track
Track Zone Ratio	11	1,86	1	1	1,86	11

